

KITCHEN

AND BATH IDEAS®

Find the
Perfect
Range
p. 29

Love It?
Get It!

17 Great Looks You
Can Achieve

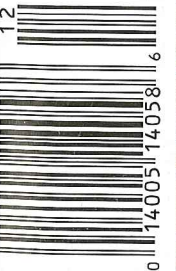
STORE MORE
in a Small Space p. 46

Soak in Style:
Which Tub is
Right for You? p. 15

Pretty Powder Room Updates p. 36

DECEMBER 2011
Display until December 13

\$5.99 U.S.



BHG SIP - Red Checkout



CASUAL CONNECTION

A clean-lined yet classic kitchen bridges a family's favorite gathering spaces.

written by KIMBER MITCHELL
 photographer JAMES SALOMON
 field editor SUSAN SALOMON

LAYERS OF UNSIGHTLY ASPHALT and vinyl siding didn't stop David Foley and Paul Fiore from falling in love with their 1868 Greek Revival home in Cambridge, Massachusetts. But there was little to like in the kitchen, tucked away from other rooms at the back of the house. "It was an assemblage of mismatched parts that had been added over time, and it took up nearly the whole backyard," David says.

Seeking a central hub for everyday gatherings and a more spacious yard for their young son, the pair knew the entire addition had to go. And they didn't have to look far for help. David and Paul, both architects, designed a replacement themselves—a space-savvy two-story addition that includes a new kitchen on the main level.

Key to the kitchen's family-friendly character is a tall pass-through that allows the cook to interact with others in the adjoining family room. "That simple opening really connects the kitchen with the rest of the house," David says.

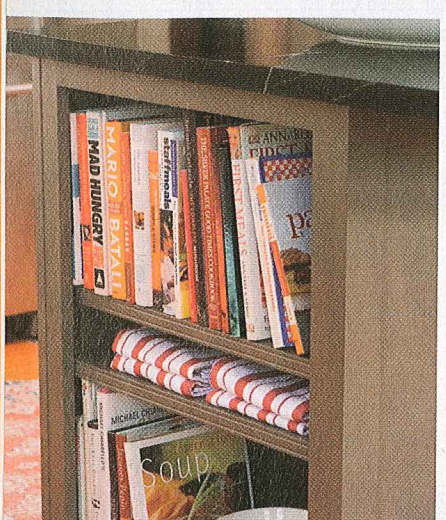
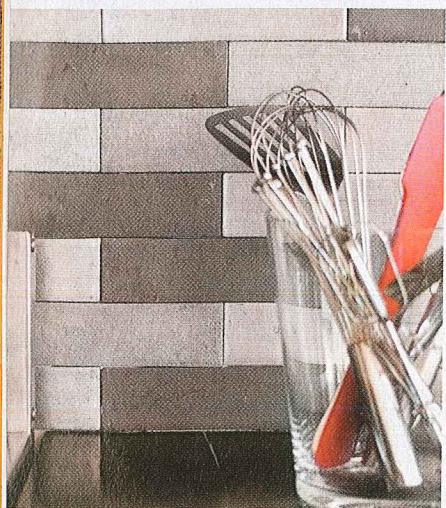
In keeping with their laid-back lifestyle, David and Paul eschewed a formal dining room in favor of a casual eat-in area nestled in a bay of windows. The expansive windows flood the modest-size kitchen with natural light,

ABOVE: The shimmering interplay between the aluminum tile backsplash and the stainless-steel range and hood creates a striking focal point in the work zone. **OPPOSITE:** Placed in a slight curve to mimic the arc of the peninsula, red glass pendant lights add a dash of drama to the neutral palette. Diner-style swivel stools offer in-kitchen seating.





small kitchen *casual connection*



OPPOSITE: This multipurpose storage unit includes pullout shelves for food staples and filing cabinets for organizing papers.

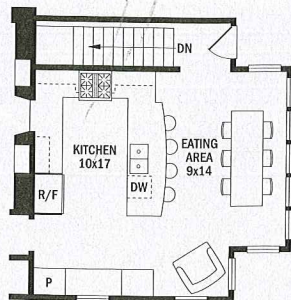
ABOVE LEFT: The pass-through's peaked upper molding is a nod to the home's Greek Revival roots. **ABOVE MIDDLE:** Windows in the casual dining area overlook the backyard—now a refreshing haven for alfresco gatherings. **ABOVE RIGHT:** A single-lever faucet and integrated countertop drainboard reinforce the clean-lined character.

MIDDLE LEFT: A mix of tones in the aluminum tile backsplash marries the cool stainless-steel appliances with the warm khaki-color cabinetry. **BELOW LEFT:** Tucked into the end of the peninsula, open shelves maximize storage.

enlarging the sense of space. Black soapstone countertops and khaki-color Shaker-style cabinetry reflect David and Paul's preference for clean lines while exuding the warmth of a historical home.

With storage space at a premium, the design duo made every inch count with solutions that do double duty. A hardworking peninsula defines the work zone from the dining area while maximizing storage. "In a U-shape kitchen, it's difficult to make good use of the corners," Paul says. "The peninsula provides corner space on the outer side as well as cookbook storage on the end." Just outside the work triangle, a multipurpose storage center compensates for the kitchen's minimal wall cabinets by serving as a pantry, glassware bar, and desk area.

In a layout with little wall space, the range wall offered the lone opportunity to make a statement with a backsplash. Echoing the neutral hues of its surroundings, the recycled-aluminum tile showpiece is a dramatic accent. "The room's design is purposely subdued, and this element adds a little spark," Paul says.



While the new kitchen shines with sophistication, it's the synergy with the eating area, family room, and backyard that David and Paul most appreciate.

"Because of its new connection with the adjoining spaces, the kitchen makes all of them work better," David says. "It really fits the way we live."

KBI RESOURCES BEGIN ON PAGE 134.

Maximize lower cabinetry with drawers. Dishes, pots, and pans are easier to access.



ALL ABOUT CABINERY
Before you head to the showroom, brush up on basic cabinetry terms, and you'll be set to impress. BHG.com/kbicabinetry