

real redos

ALL ABOUT THE HOUSE

location
CAMBRIDGE, MA

built
1840s

house style
GREEK REVIVAL
3,000 SQ. FT.
4 BEDROOMS
3.5 BATHS

RESTACK BRICKS

The whole front exterior was redone, including rebuilding the chimneys.

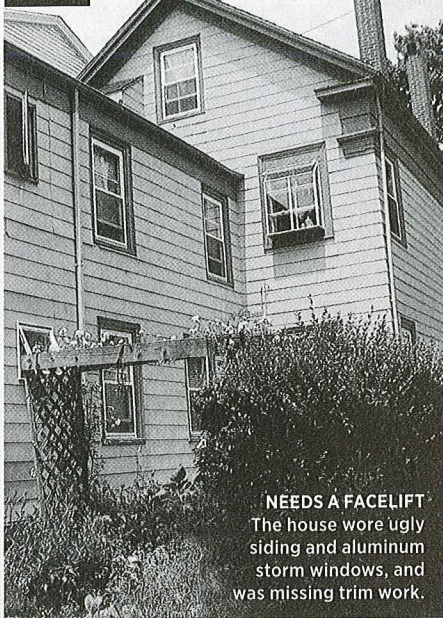
RENEW TRIM

The architects re-created the capitals on the corners of the house, and rebuilt the moldings in the Greek Revival style.

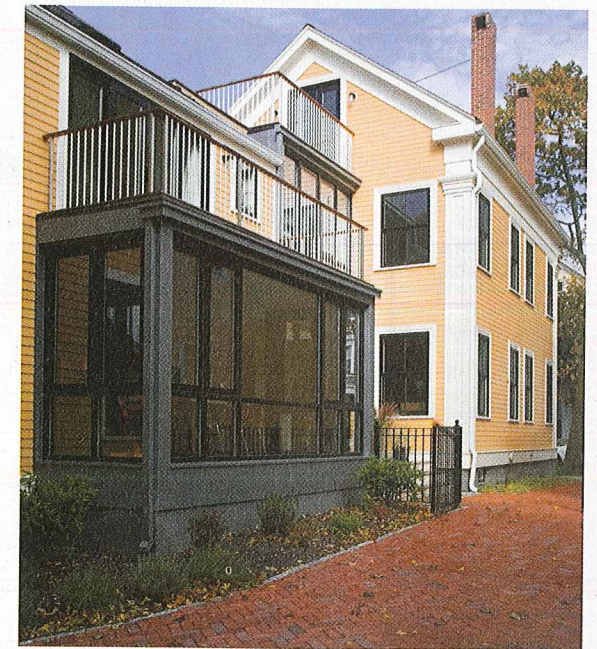
RE-SIDE FACADE

The front was re-sided with Hardie Plank cement board (hardieplank.org) and painted Stuart Gold (benjaminmoore.com).

BEFORE



NEEDS A FACELIFT
The house wore ugly siding and aluminum storm windows, and was missing trim work.



CLEVER RECONSTRUCTION

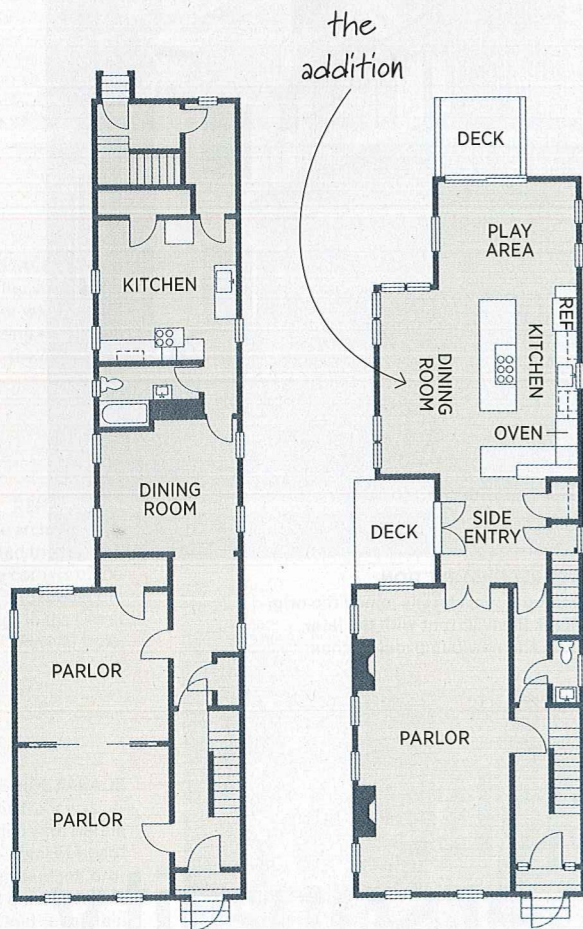
The remodel successfully joined the original Greek Revival front with the later addition and new bump-out kitchen.

split personality

One house, two styles: How a young Boston family blended a home's historic character with their own modern European aesthetic

WRITTEN BY JUDI KETTLER PHOTOGRAPHS BY JAMES R. SALOMON

David de Swaan Arons and Peggy Martheze bought a house in Cambridge, Massachusetts, that they once called “a dump.” However, it was a chance meeting with architects (and neighbors) David Foley and Paul Fiore of Foley Fiore Architecture that convinced them they had made a wise choice. After seeing what the architects had done with their own house in the neighborhood, which was similar in style, David and Peggy hired the firm to remodel their home. Keeping the historic nature of the house in mind, the team joined the original Greek Revival front with the 20th-century add-on by building a modern glassed-in bump-out to a new kitchen, with a new second-floor terrace and a rooftop deck.



1st floor before
The railcar-like layout, with double parlors, formal dining room and skimpy kitchen, did not suit the owners.

1st floor after
Removing walls in the parlors, creating a proper side entry and expanding the kitchen makes a more comfortable living space.



GENERAL DISREPAIR
The interior, including the kitchen (shown), was a long row of narrow rooms with sloping floors.

BRING IN THE LIGHT
The wall of windows adds an urban loft feel to the space and opens the kitchen and dining area to the outdoors.

SHOP WISELY
An inexpensive but stylish FOTO aluminum light fixture (\$29.99; ikea.com) hangs over a table bought at Pottery Barn years ago.

FLOOR PLANS:
STEVE STANKIEWICZ

HIDE THE MECHANICS
The metallic porcelain floor tile ([stone source.com](http://stone-source.com)) has radiant heat, eliminating the need for bulky baseboard radiators.

USE WARM TONES
The countertops are Absolute Black granite (tilesbyperfection.com). The custom cabinets were made by Christian Keller Woodworking, Medford, MA.

GO HIGH-END
A Miele stainless steel range hood (miele.com) is large enough to accommodate the Miele 6-burner gas cooktop in the island.

BE INNOVATIVE
Architects Foley and Fiore used a "barn door" track instead of hinges on the doors to the master bathroom.

ADD A FOCAL POINT
A large window was installed over the sinks to allow a view of the backyard and to bring more light into the master bedroom.

STAY CONSISTENT
To match the clean-lined look throughout the house, the couple chose an all-in-one sink/countertop (wetstyle.ca).

STEP IT UP
Brazilian Rosewood floors (lumberliquidators.com) add richness to the rooms.



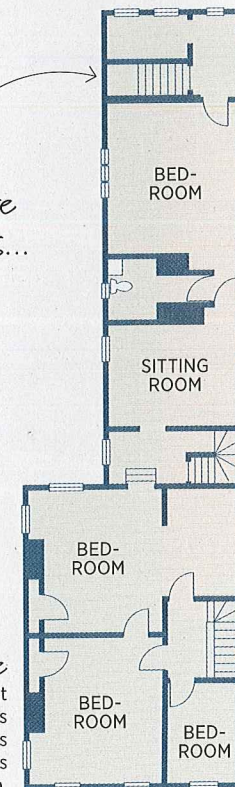
TIRED AND TASTELESS
The old bathroom was dark and cramped.



PARE IT DOWN
A single pane of stationary glass serves as the shower door. The shower hardware is Grohe (groheamerica.com).

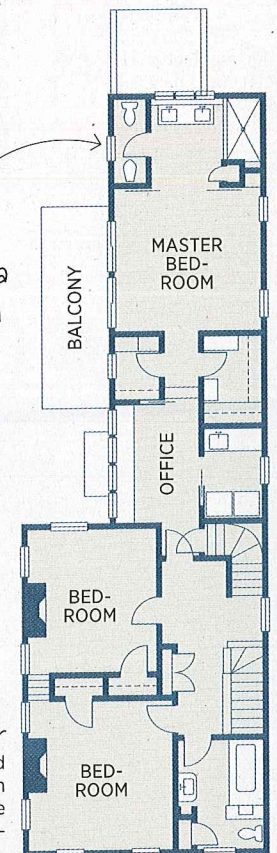
The house is finished with a mix of traditional styles paired with modern looks that work well together.

once there were stairs...



2nd floor before
Three bedrooms in front and one in back was not practical for this young family, nor was sharing just one bath.

now it's a bathroom



2nd floor after
The gut renovation added two new bathrooms, an upstairs laundry, office area, master suite and re-designed stairway access.